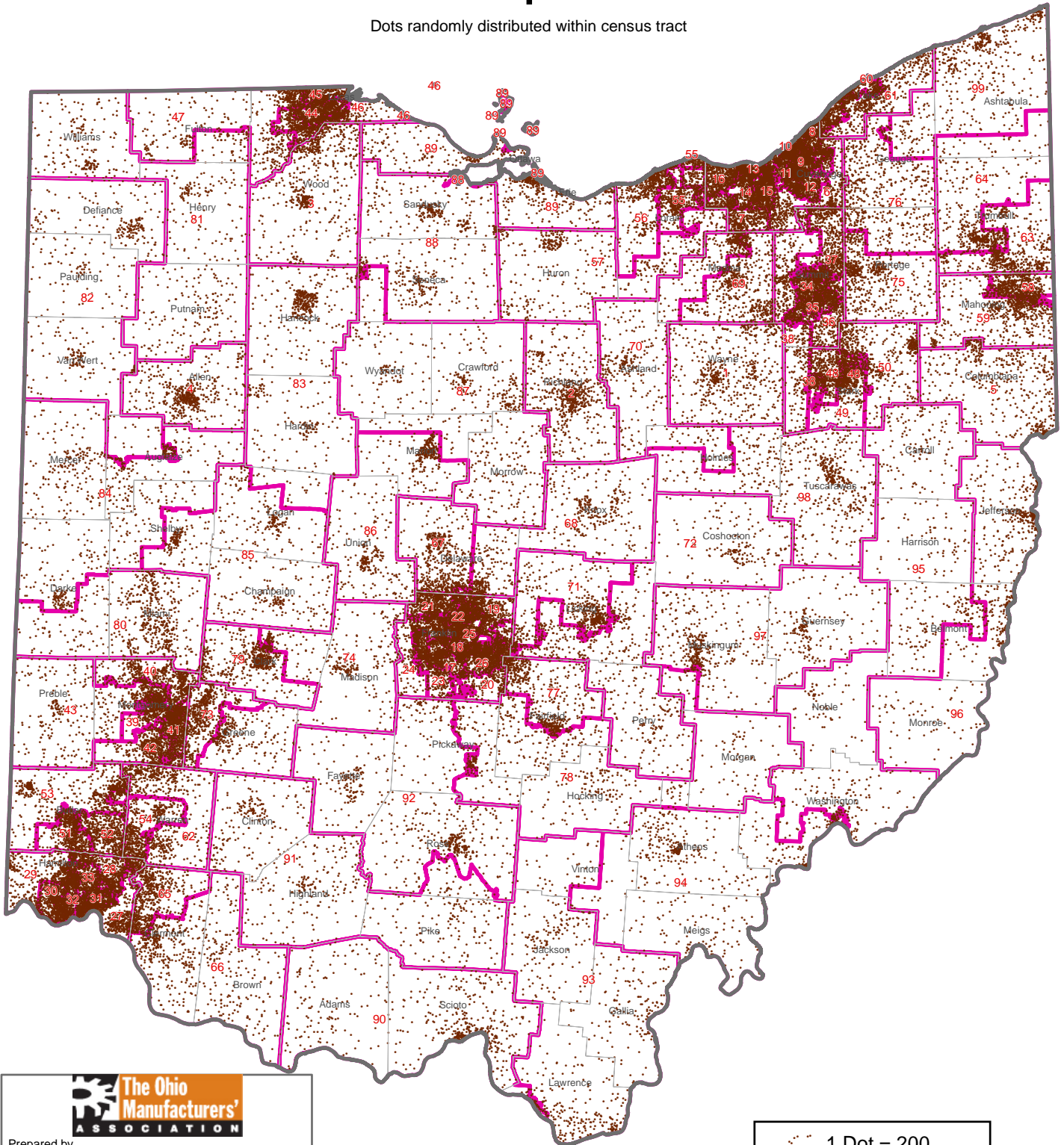


# 2012 Population

Dots randomly distributed within census tract



  
Prepared by  
The Northern Ohio Data & Information Service (NODIS)  
  
Maxine Goodman Levin  
College of Urban Affairs  
August 2014 mjs

Source:  
2008-2012 American Community Survey,  
U.S. Census Bureau

1 Dot = 200  
Persons  
House Districts